

GenSolve™ 365

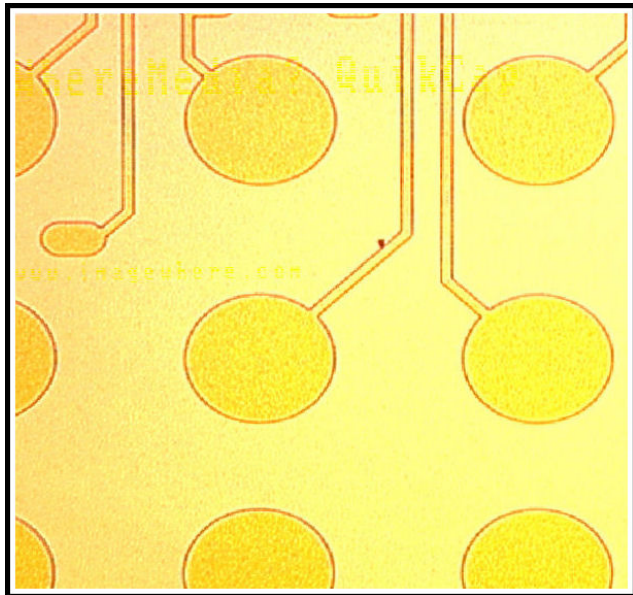
Isoprene Negative Resist and Residue Remover

ADVANTAGES

- Bulk negative-tone photoresist removal capability
- Complete removal of residual negative-resist residue after ash processing
- Immersion tool process times: typically 30 minutes (bulk resist removal)
- Spray tool process times: 30 – 45 minutes
- Low etch rates of Aluminum, Titanium, and Titanium Nitride
- No etch rates of common dielectrics
- Long shelf life

PROCESS RESULTS

Negative-tone photoresist rework on Aluminum layer



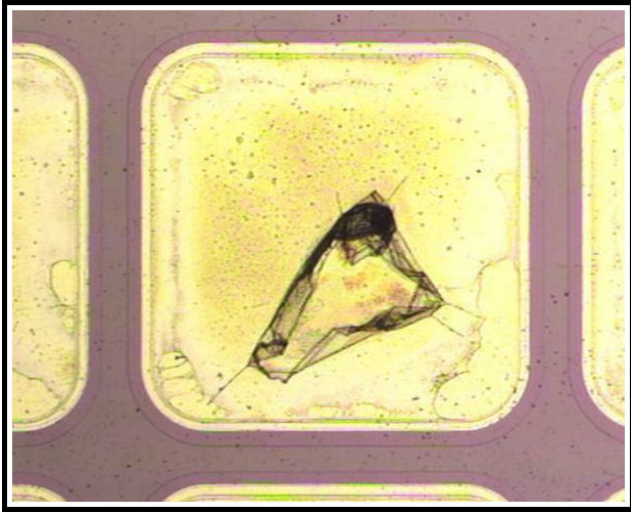
Unprocessed



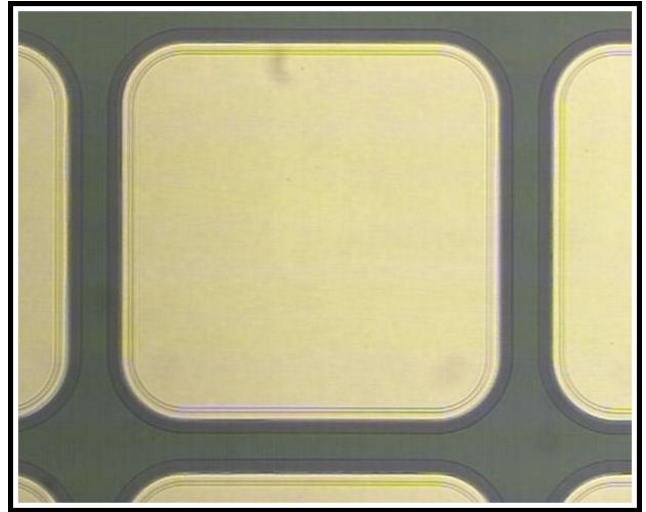
GenSolve™ 365, 20 Minutes, 75°C
Static Immersion Processing

PROCESS RESULTS (Continued)

SC180 Negative-tone photoresist removal, Au/Al Pattern on Dielectric



Post Etch, Pre Resist Strip



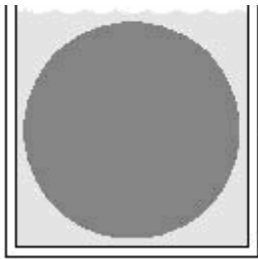
GenSolve™ 365, 20 Minutes, 75°C

PRODUCT DESIGN

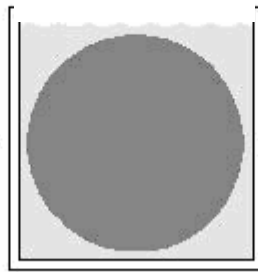
- GenSolve™ 365 is a single formulation product that is not modified for specific uses. This product is designed to swell and dissolve Isoprene Negative Resist resins along with all PACs that may be present. Bulk resist films or post-ash residues can be stripped in static bath, immersion, batch or single-wafer spray tools.

IMMERSION -TOOL PROCESS FLOW

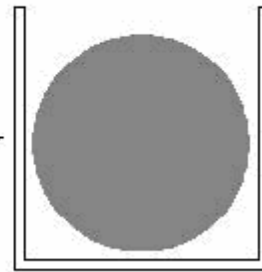
GenSolve™ 365
60-90 °C, 20-30 min.



DI water rinse

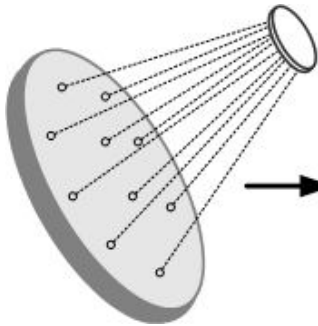


IPA / N2 Dry

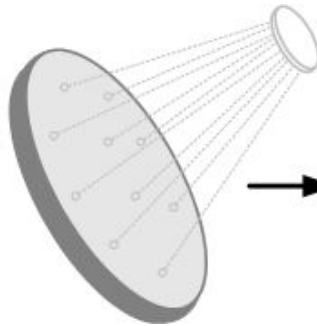


SPRAY -TOOL PROCESS FLOW

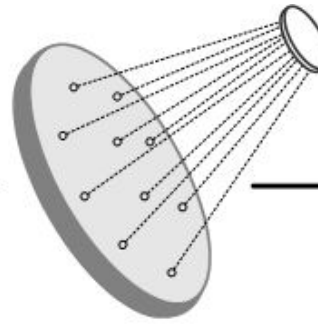
GenSolve™ 365
60-90 °C, 30-45 min.



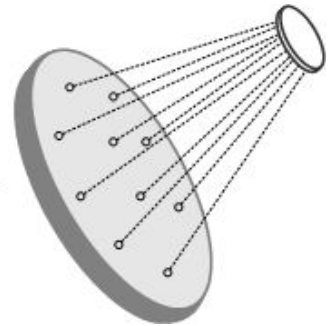
Intermediate IPA Rinse
(Optional)



DI Water Rinse



IPA / N2 Dry



ADDITIONAL INFORMATION

Product Handling:

Wear protective gloves and safety glasses or face shield. Causes eye irritation. Inhalation of vapor or mist may cause respiratory tract irritation. Prolonged contact may cause dermatitis and burns. Wash thoroughly after handling this product. Keep container closed when not in use.

Storage:

Store in a well-ventilated area, in original containers. Keep away from strong oxidizing or reducing agents. Shelf Life: 2 years

Physical Properties:

APPEARANCE: Dark brown liquid, SPECIFIC GRAVITY: 0.98 @ 68F, SOLUBILITY IN WATER (weight %): 100% - Miscible, BOILING POINT: >165C.

Protective Clothing:

Wear protective over garments, chemical resistant gloves and chemical splash goggles.

Material Compatibility:

Following materials of construction are compatible with GenSolve™ 365: Polypropylene and Poly Olefins, Polyethylene (low and high density), Teflon, Butyl Rubber, Teflon encap silicone, Chemraz, Aflaz, and 316L Stainless steel.

All information, statements, data, advice and/or recommendations, including, without limitation, those relating to storage, loading/unloading, piping and transportation (collectively referred to herein as "information") are believed to be accurate and reliable. However, no representation or warranty, express or implied, is made as to its completeness, accuracy, fitness for a particular purpose or any other matter, including, without limitation, that the practice or application of any such information is free of patent infringement or other intellectual property misappropriation. General Chemical is not engaged in the business of providing technical, operational, engineering or safety information for a fee, and, therefore, any such information provided herein has been furnished as an accommodation and without charge. All information provided herein is intended for use by persons having requisite knowledge, skill and experience in the chemical industry. General Chemical shall not be responsible or liable for the use, application or implementation of the information provided herein, and all such information is to be used at the risk, and in the sole judgment and discretion, of such persons, their employees, advisors and agents.

This document may contain references to certain equipment, services, technology, vendors and suppliers. Such references are included for reference only, and are intended for evaluation by persons having requisite knowledge, skill and experience in the chemical industry. These references are not to be construed as endorsements or recommendations of any particular equipment, service, technology, vendor or supplier, nor are they intended to exclude or disfavor any other of same. Of course, an independent evaluation of equipment, technology, vendors and suppliers should be performed and the ultimate decision as to selection of same rests solely with the purchaser.

©2008 General Chemical West LLC. GenSolve is a trademark of General Chemical West LLC. All rights reserved.

